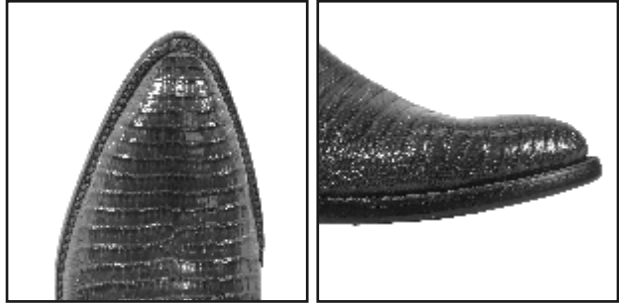


# Lucchese<sup>®</sup>

SINCE 1883

## Lucchese Toe Styles

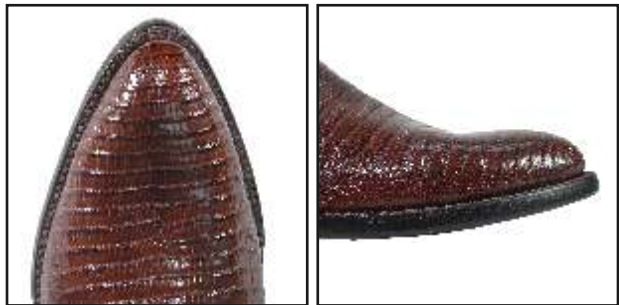
---



0 Toe



1 Toe



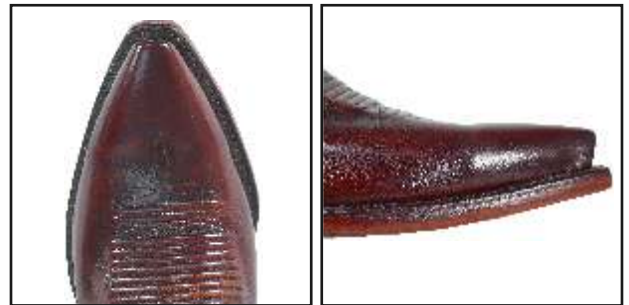
2 Toe



3 Toe



4 Toe



5 Toe



6 Toe (Men's only)



7 Toe

# Lucchese<sup>®</sup>

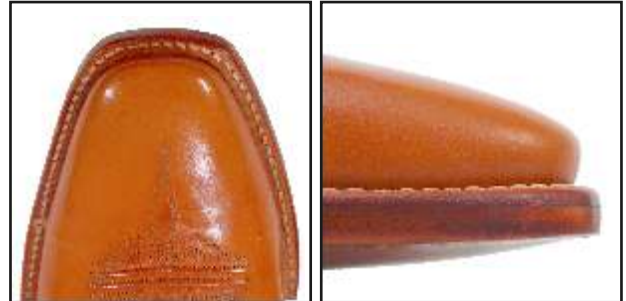
SINCE 1883

## Lucchese Toe Styles

---



8 Toe (Women's only)



K Toe



FOWLER Toe



10 Toe



D Toe



11 Toe



C / Roper Toe